

IMPORTANT SAFETY AND INSTALLATION INSTRUCTIONS

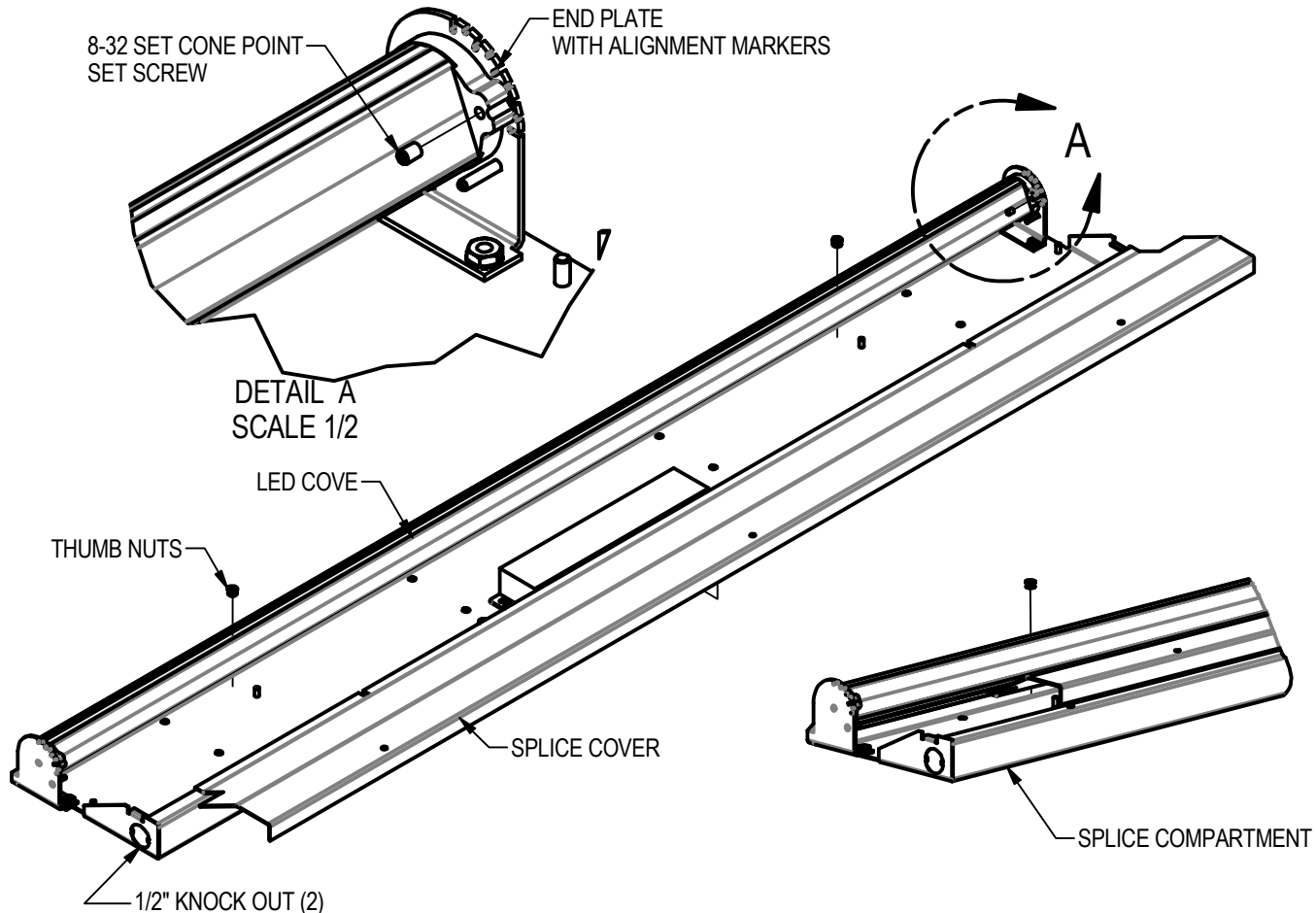
WARNING: Risk of fire and electrical shock. This product is to be installed by a qualified electrician only.

CAUTION: When using electrical equipment, basic safety precautions should always be followed including the following: Read all instructions carefully before installation and save

for future use. Make sure installation and all connections are in accordance with National Electrical Code and any local regulations. To avoid possible electrical shock, be sure that power supply is turned off before installing or servicing this fixture. Servicing should be performed by qualified service personnel.

These instructions do not claim to cover all details or variations. When additional information is desired, please contact your SPI representative.

PERFORMANCE COVE 6.0



INSTALLATION STEPS:

1. REMOVE SPLICE COVER BY REMOVING THUMB NUTS; AND PULL IT UP AND AWAY FROM SPLICE COMPARTMENT.
2. FASTEN TO SURFACE USING PROVIDED HOLES (HARDWARE BY OTHERS).
3. BRING POWER FEEDS WIRES IN THROUGH KNOCK OUTS ON ENDS AND MAKE NECESSARY ELECTRICAL CONNECTIONS PER LOCAL AND STATE CODES.
4. REPLACE SPLICE COVER MAKING SURE THAT SPLICE COVER HOOKS FIT IN MATING HOLES ON SPLICE COMPARTMENT AND HOLD FIRMLY IN PLACE WHILE REPLACING THUMB NUTS ONTO SPLICE COVER.

* TO ROTATE THE LED LAMP LOOSEN 8-32 SET SCREWS (BOTH ENDS) AND ROTATE TO DESIRED ANGLE (USE GUIDE MARKS AS NEEDED TO HELP ORIENTATE TO DESIRED POSITION). FASTEN SET SCREWS TO PREVENT ROTATION ONCE DESIRED POSITION IS REACHED.

EC19-066
1/15/20 BE
REV. 1:
UPDATE
MODEL VIEW

07/17/2019
IS82791X